

HOW TO IDENTIFY A CARRARO AXLE

First of all search for the metal tag fitted on the axle or transmission.

It shows all the information needed to properly identify the product

AXLE TYPE	SERIAL N.	
20.19		
CARRARO N.	CUSTOMER N.	TOTAL RATIO
359539		19.2
INPUT ROTATION	DIFFERENTIAL TYPE	
CW	LIMITED SLIP	
OIL SPECIFICATION	LOCAT.	LIT.
AGIP ROTRA MULTI TH	DIFF.	4.5
AGIP ROTRA MULTI TH	EPIC.	0.7
CARRARO		

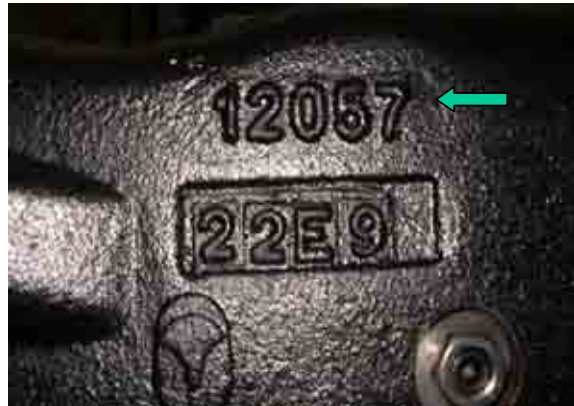
MADE IN ITALY

If tag is missing, look for the 5 digit code on the casting (see images below).
This code allows us to trace the correct product assembly and find the exact part number.

Picture 1 – Wheel Hub



Picture 2 – Axle Casting



Picture 3 – Differential Housing



Picture 4 – Housing





Targhetta
Tag

Modello Model	AXLE TYPE	SERIAL N°.	Numero di serie Serial number
	20.19		
Codice Axle part number	CARRARO N°.	CUSTOMER N°.	TOTAL RATIO
	359539		19.2
	INPUT ROTATION	DIFFERENTIAL TYPE	
	CW	LIMITED SLIP	
	OIL SPECIFICATION	LOCAT.	LIT.
	AGIP ROTRA MULTI THT	DIFF. 4,5	
	AGIP ROTRA MULTI THT	EPIC. 0,7	

MADE IN ITALY